

A romantic couple is shown in bed, embracing and sleeping peacefully. They are lying on their sides, facing each other. The woman is on the left, wearing a light-colored tank top, and the man is on the right, wearing a white t-shirt. They are resting on pillows and a bedsheet, all of which feature the MLILY logo. The scene is bathed in a soft, blue light, creating a calm and intimate atmosphere. The MLILY logo is prominently displayed in the top left corner.

**MLILY®**

**Relieve Pressure, Sleep Better**



## WAKE UP ENERGIZED AND STRESS-FREE

Sleeping well directly affects your mental and physical health. Sleep deprivation can take a serious toll on your daytime energy, productivity, emotional balance, and even your weight. The right mattress is vital for our wellbeing. Relaxed body equals relaxed mind. Mattress that offers you the proper support enables you to fall asleep faster, sleep deeper and wake up rejuvenated.

MLILY® is an innovator and expert in the constant development of the best sleep solutions for deep relaxation of the human body. Studies have shown that **MLILY® pressure-relieving mattresses** can increase the average deep sleep time of the overall population by **13%**. On the other hand, they can increase the deep sleep time of people over 50 years old, who have higher adaptability and sensitivity to memory foam mattresses, by **23.3%**. Even better, the researchers found out that sleeping on **MLILY® pressure-relieving mattress** can reduce the average fall asleep time of the overall population by **49%**. For people over 50 years old, this time can be reduced by **65.77%**.



## MLILY® PROVIDES GOOD SLEEP WORLDWIDE

MLILY® is an international brand specialized in developing, producing, and selling comfortable sleeping products made from unique and innovative materials. The one-of-a-kind MLILY® Mattress and Pillow range is revolutionizing the bedroom. By improving the quality of sleep, we are changing the lives of millions of people all over the world. Millions of customers are the proof that we are on the right track. Experience MLILY® - and find out how our mattresses and pillows can change your life... forever.

## OUR RESPONSIBILITY

MLILY® products have acquired all necessary certificates, including CertiPUR®, OEKO-TEX®, and many others. All our foam types comply with the most demanding standards and regulations applied in different markets.

Besides product certificates, our company also complies with the BSCI Code of Conduct. The BSCI certificate confirms that our company is committed to the principles set out and meets, within its sphere of influence, its responsibility to respect human rights.



## OEKO-TEX®

SECURITY IS CERTAINLY A GOOD FEELING!

MLILY® products have an OEKO-TEX® label. They are free of harmful substances that may pose health issues. We spend a third of our lives sleeping thus this time shall be as revitalizing and as healthy as possible. During our lifetime, human body is in constant contact with textiles used in various forms from clothing, linen to fabrics, for the purpose of the interior decoration in our homes. Isn't it good to know that textiles - whether made of natural or synthetic material - do not have any substances that could harm our health? When you go shopping, be 100% sure to look for safety and transparency label that says "Reliable textile" tested for harmful substances according to OEKO-TEX® standard.



# OUR FOAMS



## • AirCell® memory foam

AirCell® memory foam provides the ideal balance of conforming support and pressure-relieving comfort. Helps increase blood circulation, allowing muscles regeneration and diminishing tossing and turning during sleep.

It instantly conforms to the body's contours, providing exceptional support while simultaneously relieving pressure.

It is hypo-allergenic, dust mite resistant, and anti-microbial, inhibiting the growth of bacteria and mold. Its breathable cell structure guarantees a comfortable sleep environment all year round.



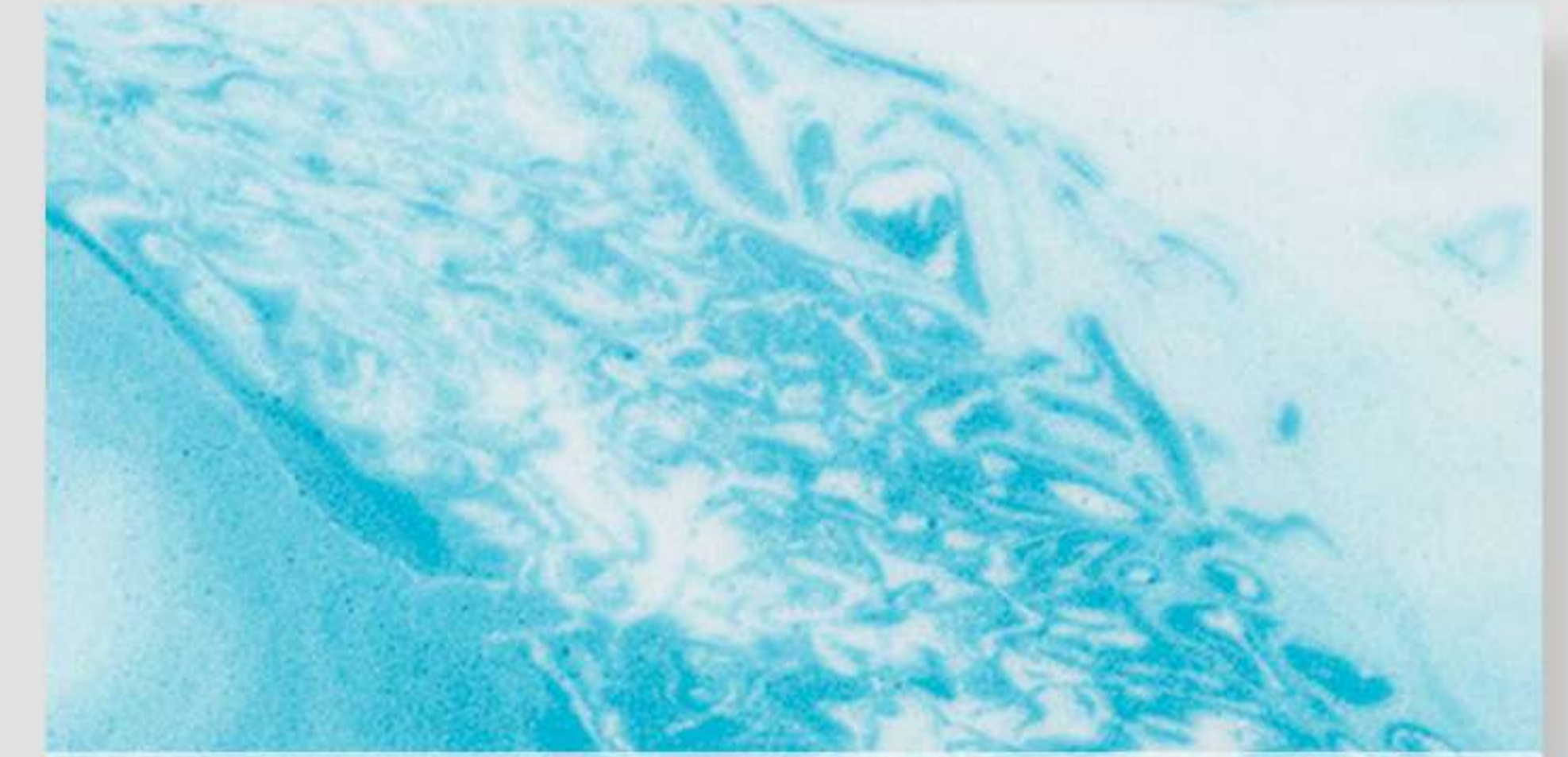
## • Gel memory foam

Regulates temperature by absorbing excess heat that the body releases during sleep.

The gel particles injected into this foam and its open cell structure provides a mild cooling effect, enhanced breathability, and an unfavourable environment for the development of microorganisms.

Evenly distributes the pressure of the body at all points of support and thus prevents pain and stiffness, providing maximum comfort and optimal support.

Ensuring great adaptability to the contours of the body, its weight, and temperature, which reduces the transmission of movements during sleep.



## • CoolFlex® foam

The CoolFlex® foam adapts to your body, relieves pressure, and responds to the individual movement for ideal comfort. It regulates your sleeping climate through breathable and ventilated holes.

Enhanced breathability and ventilation play an important role when it comes to the quality of sleep: both contribute to lower temperature (avoiding overheating), which makes cooler and more comfortable sleeping environment.

A more dry and fresh sleeping environment contribute to better hygiene.

Prolongs the longevity of the product and it ensures longer and better sleep.



• **Flex Support Base foam**

Flex Support Base foam is often the bottom layer of our mattresses. A mattress needs to provide the support needed to keep the spine aligned so the sleeper's muscles relax instead of tightening to compensate. This high-grade foam completes the bottom of the mattress to provide long-lasting durability and support for the top layers.



• **Smart™ foam**

The specially engineered Smart™ foam is breathable, flexible, and effectively adapts to the body's natural contours. It provides all the benefits of latex while being allergy-free. Smart™ foam ensures a more comfortable, restful night's sleep.



• **Pocket springs**

Integrated Pocket springs give stability to the mattress and increase the height. The pocket springs layer has 7 comfort zones. Zoning means that different mattress sections have different levels of support to help improve spinal alignment. As they work independently from each other, each spring reacts only to the pressure applied to that area.



• **Conventional PU foam**

The embossed egg pattern made of Conventional PU foam provides additional plushness to the above layers. It offers not only uniform support but also airflow to lower the temperature of the surrounding foams.



• **Blue Flow™ foam**

Our Blue Flow™ foam has been especially developed to guarantee point adaptable support and remain permanently elastic. It mixes durability, flexibility, and adaptability qualities in a single foam.



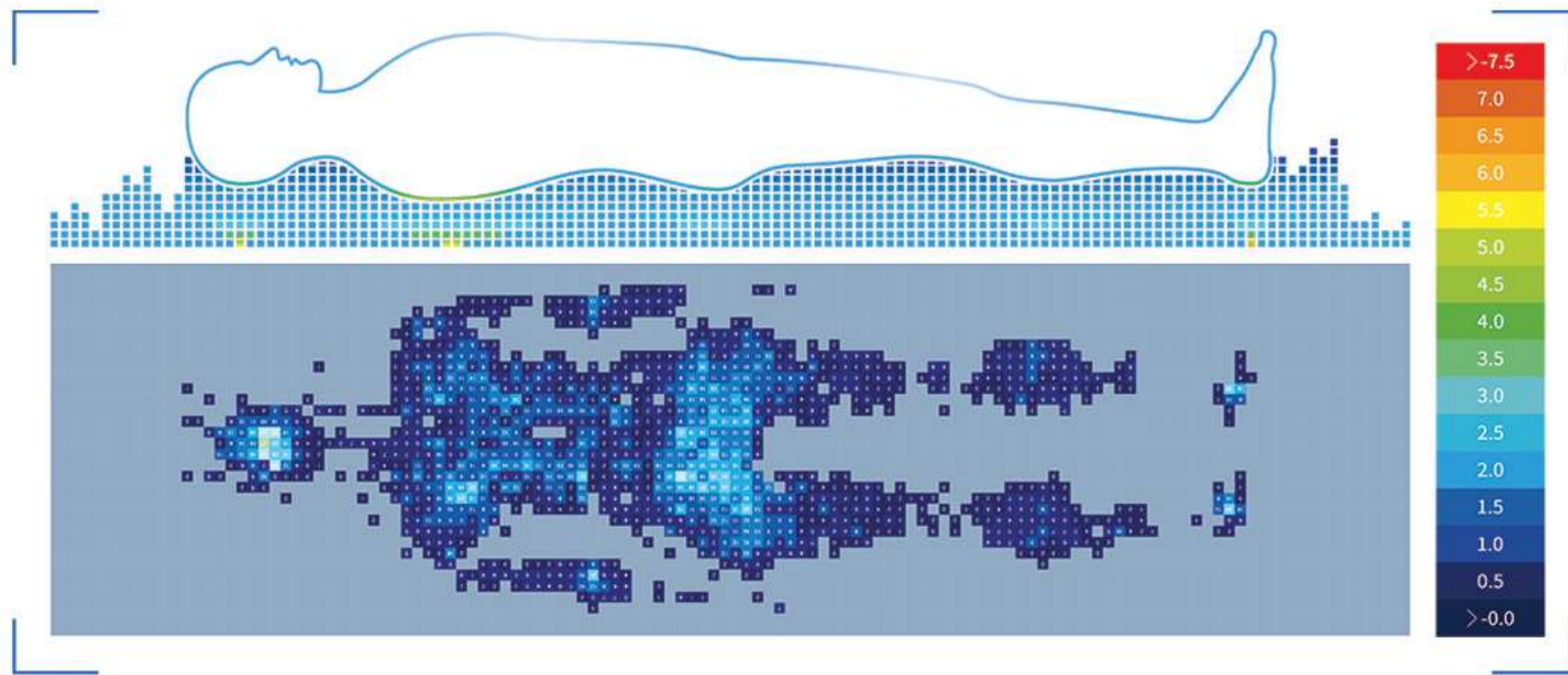
• **Responsive Support™ foam**

Responsive Support™ foam it is more breathable, thus maintaining a fresh sleeping environment. It's more elastic and will conform to your body's unique contours, thus providing point-adaptable support. Durable and will maintain its shape during the mattress's life span.

## MLILY® MATTRESSES ARE SCIENTIFICALLY PROVEN TO ADAPT TO THE CONTOURS...

### IT IS INDICATED THAT:

The fit between MLILY® Pressure-Relieving Mattress and people's bodies can be as high as **97.8%** (77.66% - 97.8%).



DATA SOURCE: ERGONOMICS RESEARCH CENTER, ANHUI AGRICULTURAL UNIVERSITY

## CLINICAL STUDY

### FALL ASLEEP FASTER!

MLILY® mattress reduces the time to fall asleep of the overall population by **49%**, and, for people over 50 years old, by **65.77%**.

### SLEEP BETTER!

MLILY® Mattress increases the average deep sleep time of the overall population by **13%**, and for people over 50 years old, by **23.3%**.



DATA SOURCE: AUTHORITATIVE TRIAL REPORT OF DALIAN VITUP INTERNATIONAL HOSPITAL

# MATTRESS collection

**for energized and stress free mornings**

- Suitable for all sleep types for side, back, or stomach sleepers
- Provides optimal comfort and support
- Hypo-allergenic
- Resistant to dust mites, fungi, and bacteria
- Long-term guarantee



# AIR Mattress

## DESIGNED WITH THE ENVIRONMENT IN MIND

- 400 boats and 1,500 fishermen collect garbage from the Mediterranean Sea.
- Aluminum, glass, plastic bottles or other trash are sorted into their unique recycle chains.
- Textile technology recycles plastics into Seaqual™ yarns by turning the plastic into granulate.
- Cover with Seaqual™ yarns has a very soft-to-the-touch feel and the remarkable ability to allow air to flow easily.
- Seaqual™ fabric offers comfort, function, and durability.

## Breathable Seaqual™ Cover



SEAQUAL™  
INITIATIVE



**NEW**

# AIR Mattress

## SECRET BEHIND THE COMFORT

AIR mattress is MLILY® latest innovation providing comfort and style while also assisting in the clean-up of our lovely world for future generations. By utilizing the latest technologies, this mattress is made to be supportive, breathable, and helps regulate your body temperature. These features help you achieve restful sleep by reducing tossing and turning. MLILY® AIR mattress helps disperse heat and wick moisture away at night so that you can sleep longer and more comfortably.



1 CoolFlex® foam

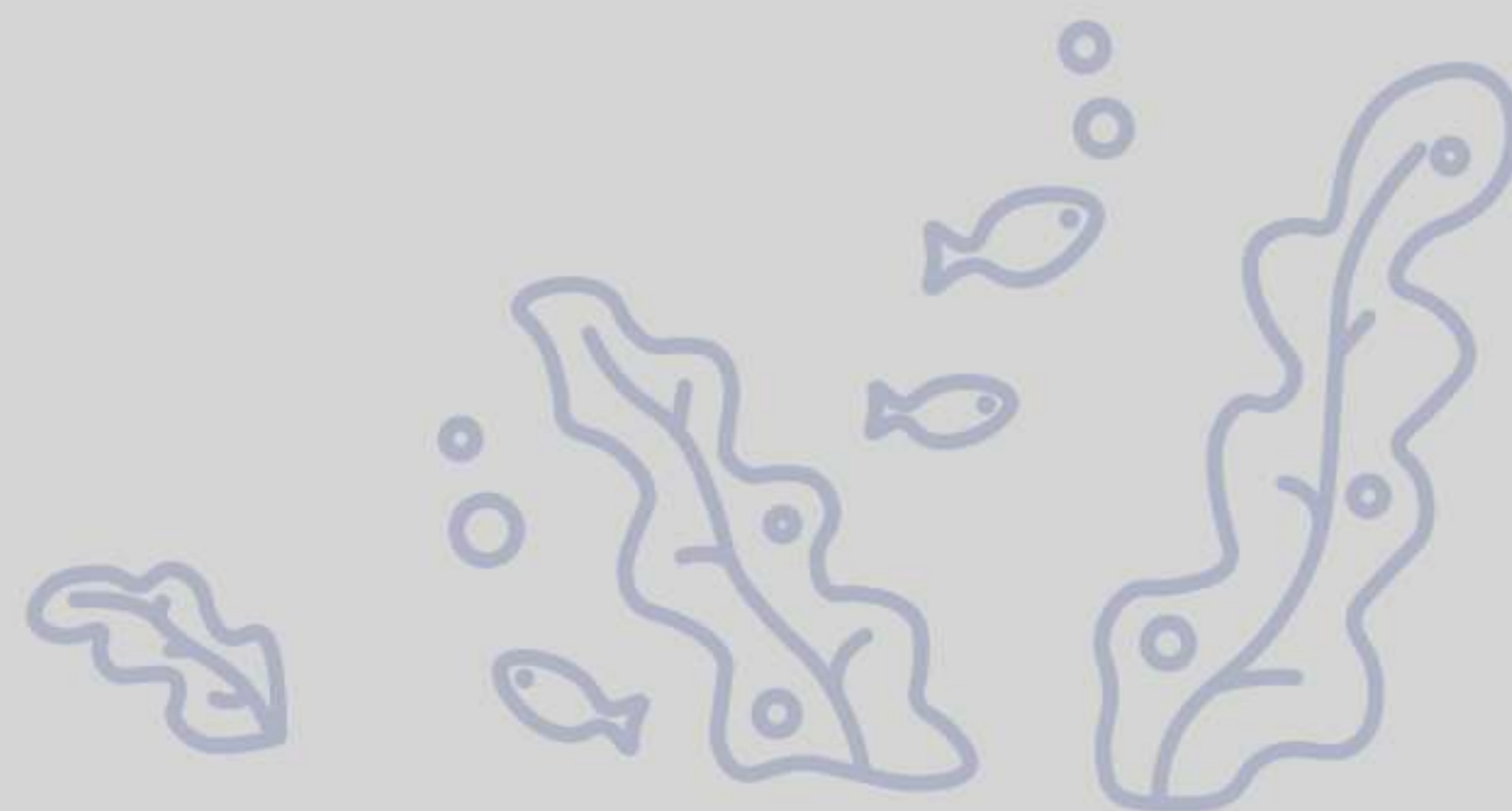


2 AirCell® memory foam



3 Responsive Support™ foam

Cover with **Seaqual™ element** brings a soft-to-the-touch feel and the important ability to let the air flow easily. This fabric offers comfort, function, and durability. Seaqual™ interlaced threads throughout the cover move with you to reduce bunching and create natural air gaps for breathability.



▲ mattress height 18cm ▼

# PRO Mattress

THE MIRACULOUS TOUCH OF NATURE...

- Superior moisturizing properties
- Adds a feeling of comfort to the skin
- Has antimicrobial action
- Adds soft touch and shine to the fabric



**NEW**

# PRO Mattress

## AWAKEN YOUR SENSES

PRO mattress is a multi-zone mattress. It has a surface accommodated to different weights of body parts that come into contact with its surface during sleep. It is designed to possess different extents of rigidity in the head, shoulders, back, hips, thighs, knees, and feet area. That way, its surface easily conforms to yield adequate support. The 7 different anatomic zones eliminate compressions and guarantee unclogged circulation, the correct position of the body, and less turning and waking during sleep.



1 CoolFlex® foam



2 Blue Flow™ foam



3 Responsive Support™ foam

PRO mattress cover with **Avocado oil treatment** releases active ingredients absorbed by the skin and transported throughout the body for healing effects. Avocado, known for its health benefits, brings to MLILY® cover superior moisturizing properties, ads feeling of comfort to the skin, has antimicrobial action, and ads soft touch and shine to the fabric.



avocado oil



CoolFlex® foam



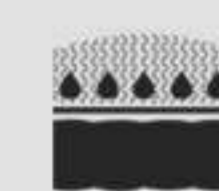
Fabric with Avocado oil treatment

7

Zone support



Optimal body support



Extra hydration while sleeping

matress height **22cm**

# PLUS

## Mattress

THE INNOVATIVE GRAPHENE FABRIC, USED FOR MATTRESS COVER, HAS INCREDIBLE FEATURES:

- Designed for people who prefer a cooler sleep surface
- Helps reduce static electricity
- Provides increased breathability
- Reduces bad odors
- Provides an anti-mite barrier



**NEW**

# PLUS Mattress

## A TOUCH OF A WONDER MATERIAL PERFECTION THAT COMES FROM NATURE

MLILY® PLUS mattress with Graphene enhanced cover is specially designed for people who prefer a cooler sleep surface. Graphene's thermal conductivity makes it very effective in heat dissipation and moving heat away from the body to maintain a comfortable sleep temperature throughout the night.



1 CoolFlex® foam



2 Egg convoluted PU foam



3 Flex Support Base foam



4 Pocket springs 7 zone

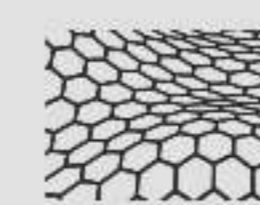


5 Flex Support Base foam

Graphene's conductive fabric is unique, and it is also called a new "wonder material." It acts as a filter between your skin and the environment, expelling heat in warmer weather and preserving and evenly distributing body heat in colder climates.



CoolFlex®  
foam



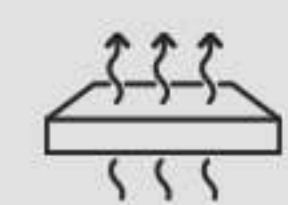
Fabric with  
Graphene yarns



Pocket  
springs



Improved  
thermoregulation



Enhanced  
breathability

▲  
mattress  
height  
26cm  
▼

OEKO-TEX®

CONFIDENCE IN TEXTILES

STANDARD 100

25.3.0154 INNOVATEX

Tested for harmful substances.  
www.oeko-tex.com/standard100

OEKO-TEX®

CONFIDENCE IN TEXTILES

STANDARD 100

25.3.0155 INNOVATEX

Tested for harmful substances.  
www.oeko-tex.com/standard100

# DREAMS

Mattress



**best  
seller**

# DREAMS Mattress

## A PERFECT EMBRACE



THE INNOVATIVE GRAPHENE FABRIC, USED FOR MATTRESS COVER, HAS INCREDIBLE FEATURES:

- Designed for people who prefer a cooler sleep surface
- Helps reduce static electricity
- Provides increased breathability
- Reduces bad odors
- Provides an anti-mite barrier



- 1** Gel memory foam
- 2** Flex Support Base foam

Graphene's conductive fabric is unique, and it is also called a new "wonder material." It acts as a filter between your skin and the environment, expelling heat in warmer weather and preserving and evenly distributing body heat in colder climates.

Memory foam      Fabric with Graphene yarns      7 Zone support      Optimal body support      Extra hydration while sleeping

matress height **20cm**



# DIAMOND

Mattresses





unique

# DIAMOND Foam Mattress

## A SUCCESSFUL DAY COMES FROM A RESTFUL NIGHT



THE INNOVATIVE GRAPHENE FABRIC, USED FOR MATTRESS COVER, HAS INCREDIBLE FEATURES:

- Designed for people who prefer a cooler sleep surface
- Helps reduce static electricity
- Provides increased breathability
- Reduces bad odors
- Provides an anti-mite barrier



1 Gel memory foam



2 CoolFlex® foam



3 Flex Support Base foam

Graphene's conductive fabric is unique, and it is also called a new "wonder material." It acts as a filter between your skin and the environment, expelling heat in warmer weather and preserving and evenly distributing body heat in colder climates.

OEKO-TEX®

CONFIDENCE IN TEXTILES

STANDARD 100

25.3.0154 INNOVATEX

Tested for harmful substances.  
www.oeko-tex.com/standard100

OEKO-TEX®

CONFIDENCE IN TEXTILES

STANDARD 100

25.3.0155 INNOVATEX

Tested for harmful substances.  
www.oeko-tex.com/standard100



CoolFlex®  
foam



Memory  
foam



Anti-Bacterial  
& Anti-Allergic  
preferences



Enhanced  
breathability



Washable  
cover

↑  
mattress  
height  
24cm  
↓

# DIAMOND Spring Mattress

unique

## GOOD SLEEP – GOOD PERFORMANCE



1 Gel memory foam



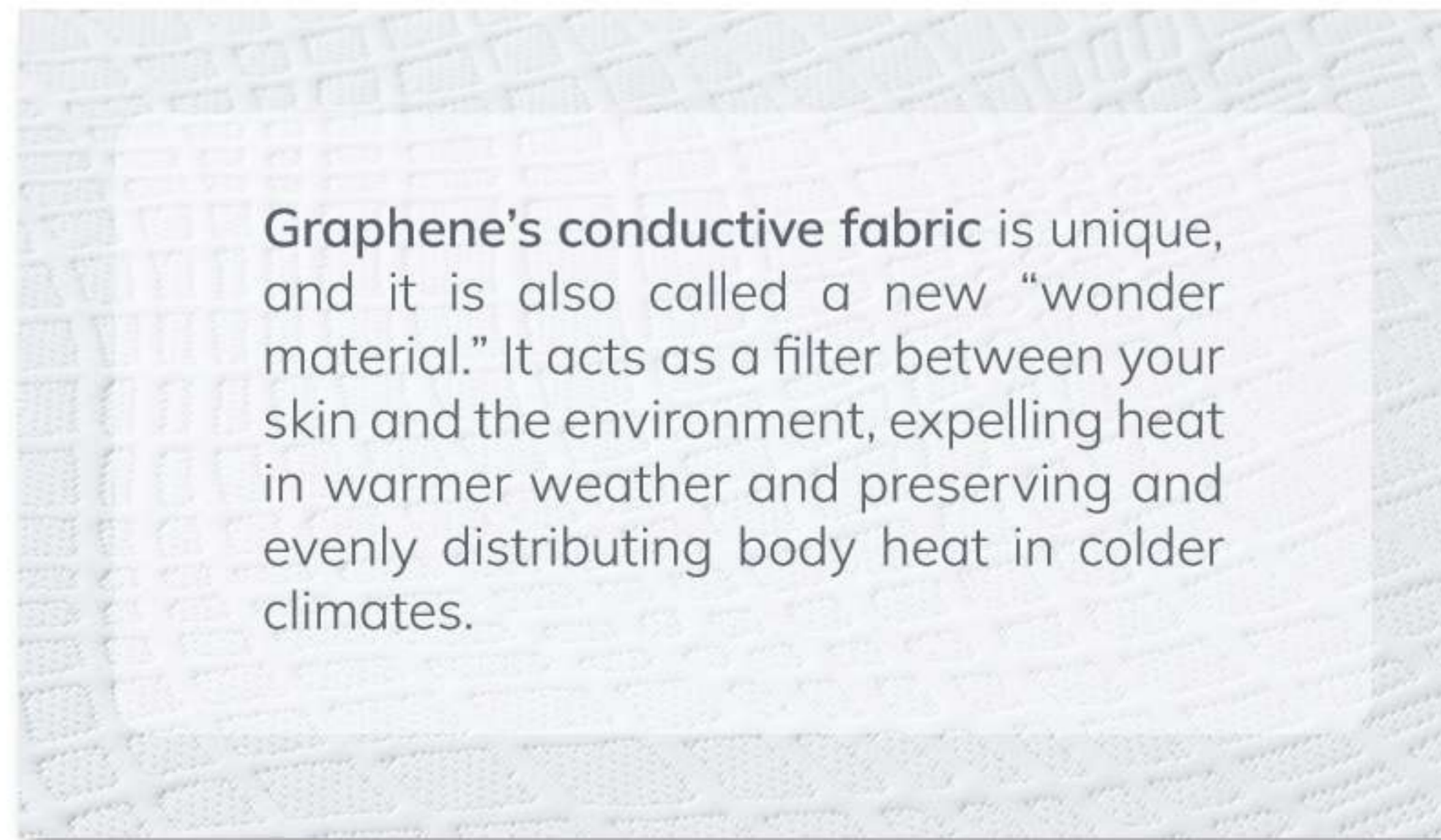
2 Flex Support Base foam



3 Pocket springs



4 Flex Support Base foam



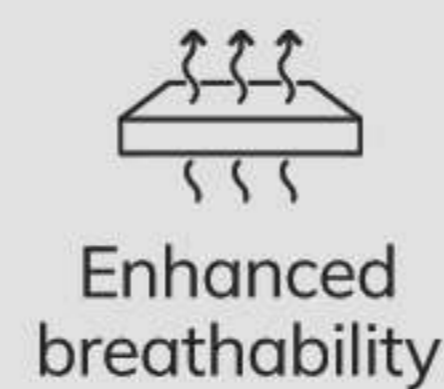
Graphene's conductive fabric is unique, and it is also called a new "wonder material." It acts as a filter between your skin and the environment, expelling heat in warmer weather and preserving and evenly distributing body heat in colder climates.



THE INNOVATIVE GRAPHENE FABRIC, USED FOR MATTRESS COVER, HAS INCREDIBLE FEATURES:

- Designed for people who prefer a cooler sleep surface
- Helps reduce static electricity
- Provides increased breathability
- Reduces bad odors
- Provides an anti-mite barrier

matress height  
24cm



# TOPPER collection

**for more comfort and mattress rejuvenation**

- Made to allow comfortable and relaxed sleep
- Offer a supportive sleeping surface
- Ideal for all body types and sleep positions
- Revitalize or change the style of the existing bed



# AIR Topper

**NEW**

## A SIMPLE SOLUTION FOR HEALTHY AND COMFORTABLE SLEEP

With the AIR topper, you can enjoy a good night's sleep and wake up feeling refreshed and ready for the day. It is created to help your body recover from a day of busy activities, providing the right amount of support and comfort to relieve pressure points during the night. It's designed to adapt to body weight, shape, and sleeping style. With its specially designed core, this mattress topper will provide the ideal level of comfort and support.



1 CoolFlex® foam



2 Blue Flow™ foam



Cover with **Seaqual™ element** brings a soft-to-the-touch feel and the important ability to let the air flow easily. This fabric offers comfort, function, and durability. Seaqual™ interlaced threads throughout the cover move with you to reduce bunching and create natural air gaps for breathability.



### Breathable Seaqual™ Cover

- 400 boats and 1,500 fishermen collect garbage from the Mediterranean Sea.
- Aluminum, glass, plastic bottles or other trash are sorted into their unique recycle chains.
- Textile technology recycles plastics into Seaqual™ yarns by turning the plastic into granulate.
- Cover with Seaqual™ yarns has a very soft-to-the-touch feel and the remarkable ability to allow air to flow easily.
- Seaqual™ fabric offers comfort, function, and durability.

topper height  
**7cm**

  
CoolFlex®  
foam

  
Washable  
cover

  
Recycled  
fabric

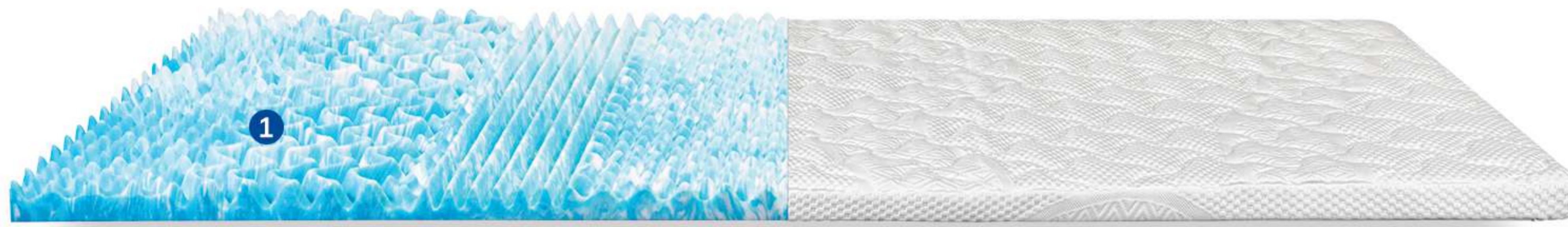
  
Optimal  
body support

  
Enhanced  
breathability

**OEKO-TEX®**  
CONFIDENCE IN TEXTILES  
**STANDARD 100**  
25.3.0154 INNOVATEX  
Tested for harmful substances.  
[www.oeko-tex.com/standard100](http://www.oeko-tex.com/standard100)

**OEKO-TEX®**  
CONFIDENCE IN TEXTILES  
**STANDARD 100**  
25.3.0155 INNOVATEX  
Tested for harmful substances.  
[www.oeko-tex.com/standard100](http://www.oeko-tex.com/standard100)

# Touch Topper



1 CoolFlex® foam

topper height **6cm**

- CoolFlex® foam
- Removable cover
- 7 Zone support
- Enhanced breathability

# Memor Topper

**MOULDED TO YOUR BODY**



1 AirCell® memory foam

topper height **4cm**

- Memory foam
- Removable cover
- Anti-Bacterial & Anti-Allergic preferences
- Washable cover



THE INNOVATIVE GRAPHENE FABRIC, USED FOR MATTRESS COVER, HAS INCREDIBLE FEATURES:

- Designed for people who prefer a cooler sleep surface
- Helps reduce static electricity
- Provides increased breathability
- Reduces bad odors
- Provides an anti-mite barrier



THE INNOVATIVE GRAPHENE FABRIC, USED FOR MATTRESS COVER, HAS INCREDIBLE FEATURES:

- Designed for people who prefer a cooler sleep surface
- Helps reduce static electricity
- Provides increased breathability
- Reduces bad odors
- Provides an anti-mite barriers

# PILLOW collection

**for perfect support and relaxing sleep**

- Made to support the head
- Made to keep the spine in natural alignment
- Made to fit the unique contour, shape, and sleeping posture of the user









**PRO** Pillow  
Molded Memory Foam

Classically shaped PRO Molded memory foam pillow is suitable for any head and neck shape. It allows muscles and joints to fully relax when sleeping. The unique molded memory foam improves airflow and breathability, ensuring deeper and more restful night's sleep.

- Completely removable and washable Avocado oil outer cover
- AirCell® foam pad
- Customizable structure and height
- OEKO-TEX® & CertiPUR® certified

Outer cover: Avocado oil-treated fabric - 99% PES, 1% EL  
Inner cover: 100% Polyester jersey fabric

DIMENSIONS: 60x40x12cm

 Anti-Bacterial & Anti-Allergic preferences	 Adapts to head and neck	 All sleeping positions	 Hypoallergenic
---	---	--	---



**AIR** Shredded Pillow

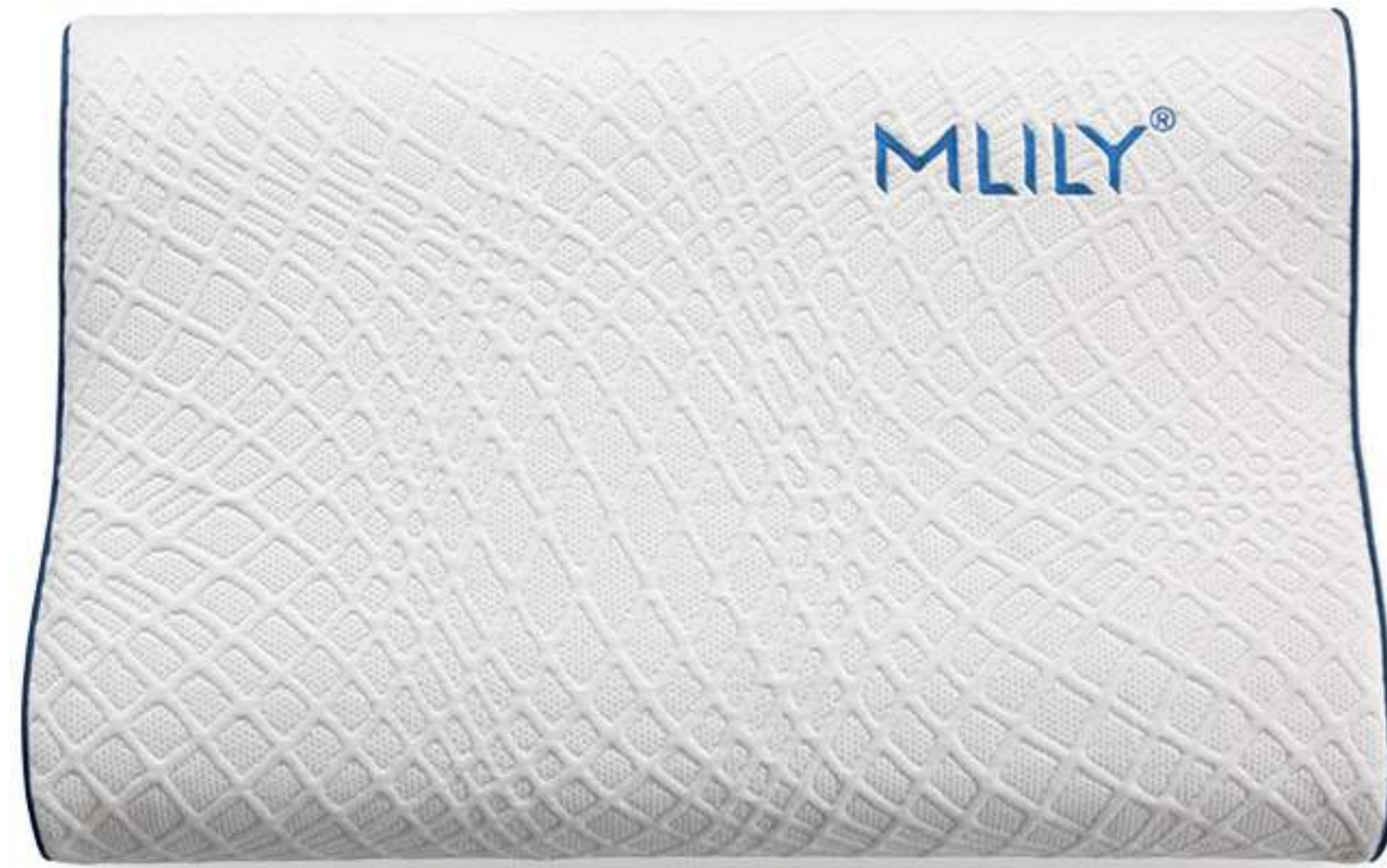
AIR Shredded pillow type is suitable for all sleeping positions. The memory foam flakes in the pillow core equally disperse pressure and prevent the creation of critical pressure points that may cause pain and stiffness.

- Completely removable and washable Seaqual™ outer cover
- AirCell® Shredded foam
- OEKO-TEX® & CertiPUR® certified

Outer cover: Seaqual fabric - 69% PES, 30% CLY, 1% EL  
Inner cover: 100% Polyester jersey fabric

DIMENSIONS: 60x40cm and 80x40cm

 Shredded memory foam	 Enhanced breathability	 All sleeping positions	 Optimal head and neck support
--	--	--	---



## CONTOUR Pillow Molded Memory Foam

Contour pillow is made of molded memory foam. It is extremely comfortable, airy, and optimized for holding a spine in a proper alignment during the whole night. An ergonomically contoured pillow core gives ideal support for the head and neck in all the right places. This pillow allows neck and shoulder muscles to fully relax while being completely supportive at the same time. It is an excellent choice for all back and side sleepers.

- Completely removable and washable Graphene outer fabric
- OEKO-TEX® & CertiPUR® certified

Outer cover: Graphene fabric - 65% PES, 22% CLY, 13% Nylon

Inner cover: 100% Polyester jersey fabric

DIMENSIONS: 60x40x11/9cm



Memory foam



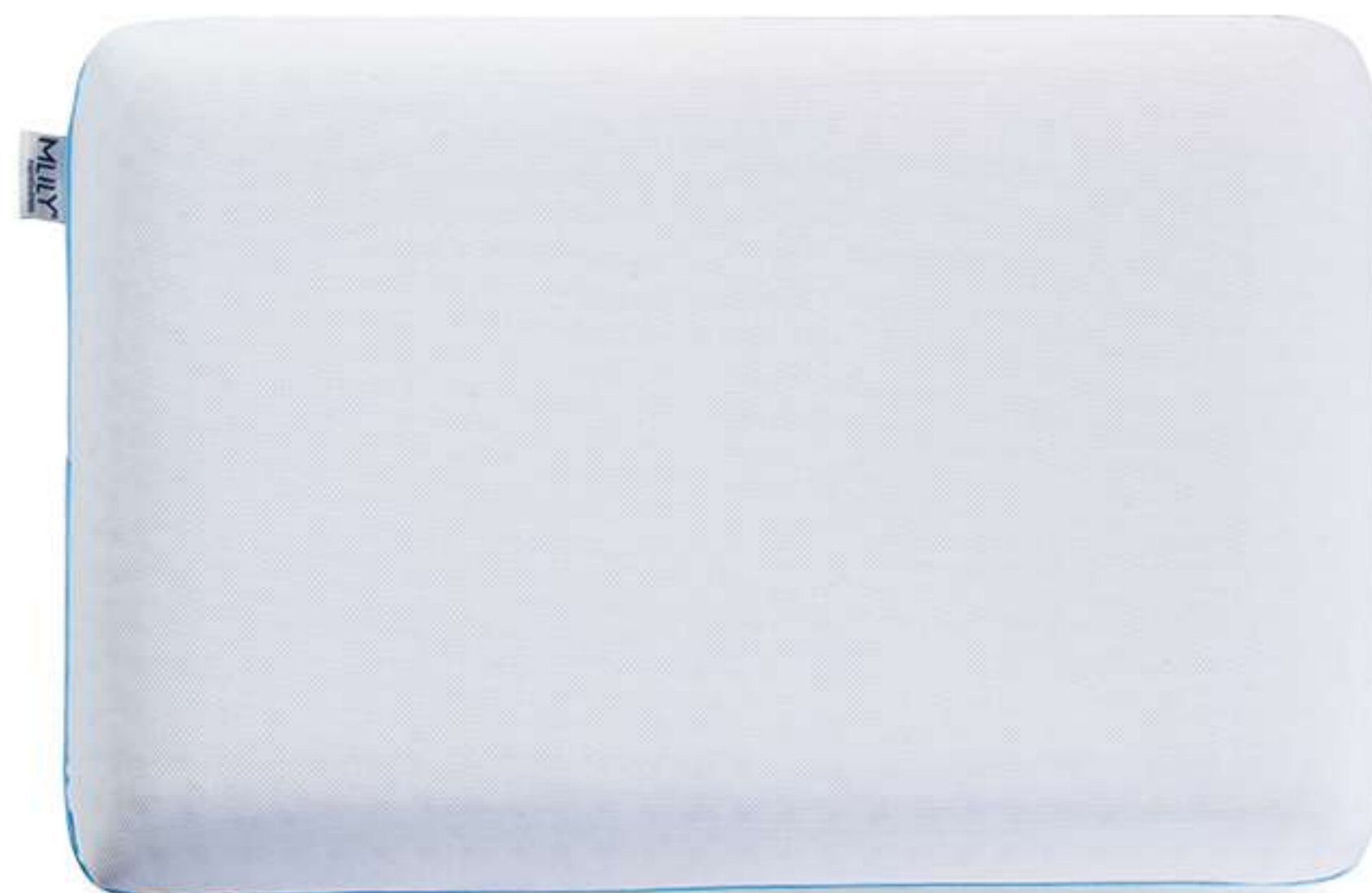
Ergonomic support



Washable cover



Anti-Bacterial & Anti-Allergic preferences



## CLASSIC Pillow Molded Memory Foam

Stays cool all night long!

Classic pillow actively responds to your body by absorbing, storing, and releasing heat to regulate temperature, providing an ideal level of comfort. Specially designed holes in the pillow core enhance air circulation, creating an unfavorable environment for the development of microorganisms.

- Completely removable and washable Polyester outer cover
- OEKO-TEX® & CertiPUR® certified

Outer cover: 100% PES

Inner cover: 100% Polyester jersey fabric

DIMENSIONS: 60x40x12cm



Memory foam



Adapts to head and neck



Pressure and pain-relieving



Hypoallergenic



# MLILY®



GLOBAL PARTNER OF MANCHESTER UNITED

## The Partnership of Dreams

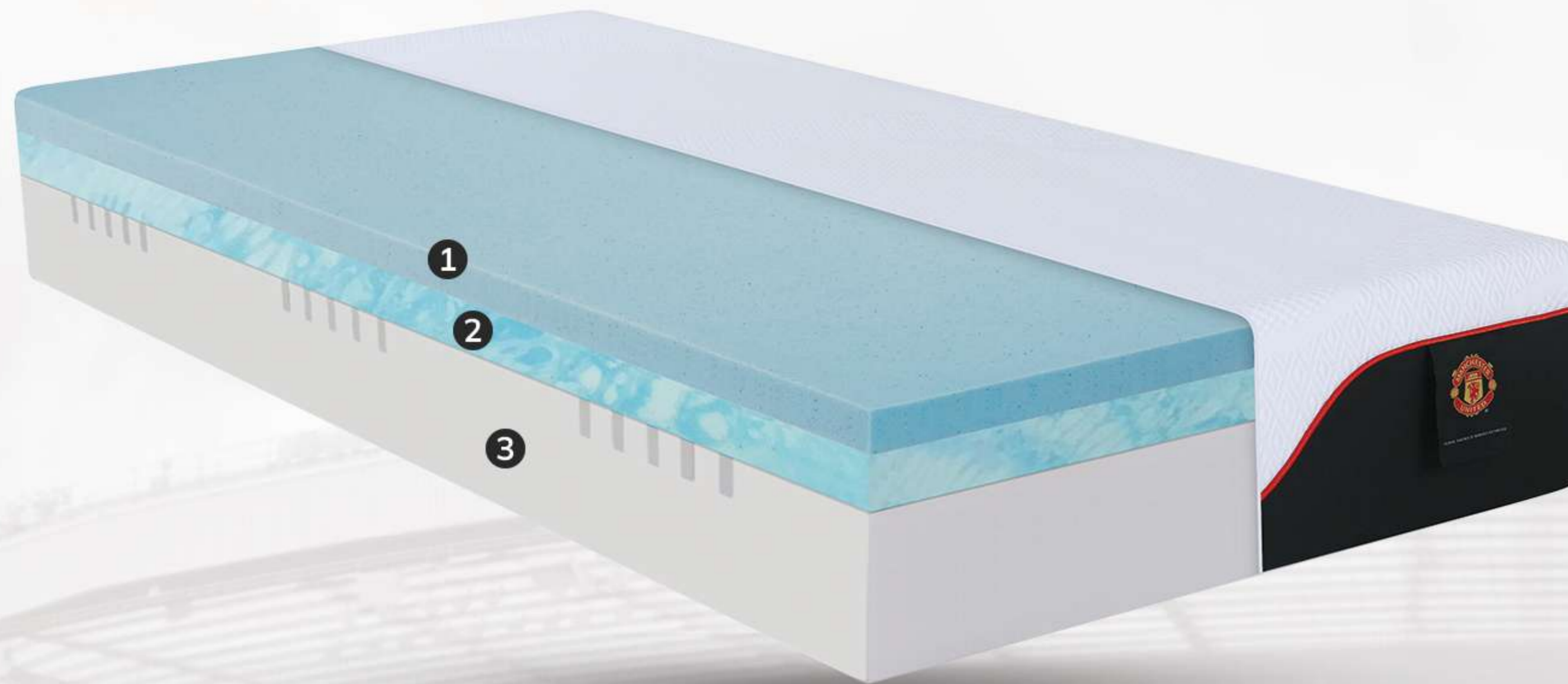
On May 16, 2018, we agreed to extend our global partnership with Manchester United to an unprecedented 10 year deal. This landmark move cemented our relationship with a powerhouse football brand and further unified our collaborative efforts between the sleep and athletic industries.

Since our original 2016 deal, we have developed the Sleep Performance Suite at United's Aon Training Complex. We have also equipped United players and coaching staff with our state of the art mattresses. Our extensive efforts with United's Recovery & Regeneration Team have now led to the implementation of new innovative studies and technologies.

Our collaborative marketing campaigns have continued to grow our brand fame and awareness globally as we look to position ourselves at the forefront of the sleep industry.



# SUPREME Foam Mattress



1 Gel memory foam



2 CoolFlex® foam



3 Flex Support Base foam

Graphene's conductive fabric is unique, and it is also called a new "wonder material." It acts as a filter between your skin and the environment, expelling heat in warmer weather and preserving and evenly distributing body heat in colder climates.



THE INNOVATIVE GRAPHENE FABRIC, USED FOR MATTRESS COVER, HAS INCREDIBLE FEATURES:

- Designed for people who prefer a cooler sleep surface
- Helps reduce static electricity
- Provides increased breathability
- Reduces bad odors
- Provides an anti-mite barrier

▲  
mattress  
height  
27cm  
▼

  
Gel  
memory foam

  
Ideal  
thermoregulation

  
Optimal  
body support

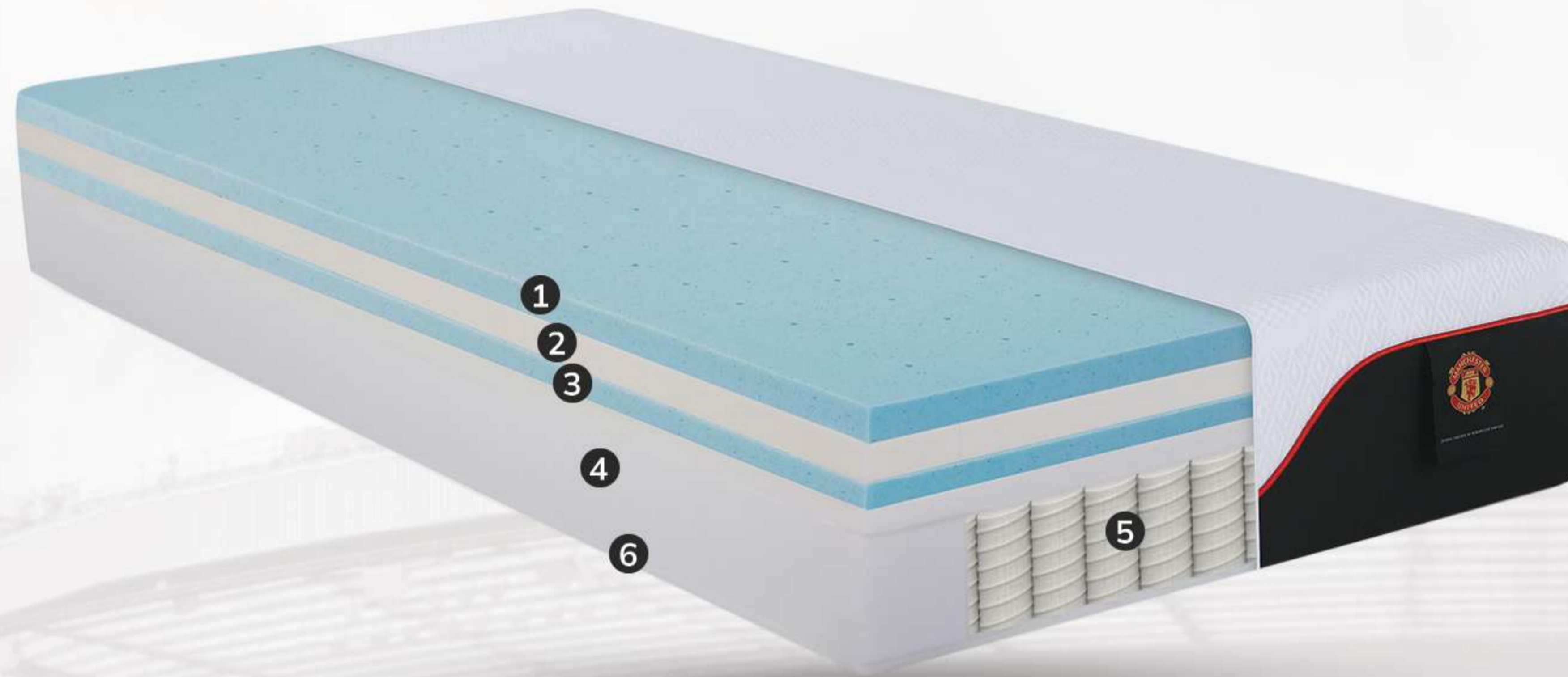
  
Anti-Bacterial  
& Anti-Allergic  
preferences

  
Washable  
cover

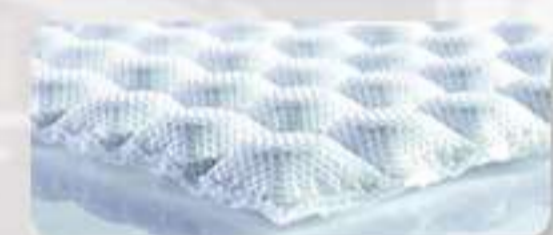
OEKO-TEX®  
CONFIDENCE IN TEXTILES  
**STANDARD 100**  
25.3.0154 INNOVATEX  
Tested for harmful substances.  
[www.oeko-tex.com/standard100](http://www.oeko-tex.com/standard100)

OEKO-TEX®  
CONFIDENCE IN TEXTILES  
**STANDARD 100**  
25.3.0155 INNOVATEX  
Tested for harmful substances.  
[www.oeko-tex.com/standard100](http://www.oeko-tex.com/standard100)

# SUPREME Spring Mattress



① Gel memory foam



② Mini springs



④ Flex Support Base foam



⑤ Pocket springs



⑥ Flex Support Base foam

Graphene's conductive fabric is unique, and it is also called a new "wonder material." It acts as a filter between your skin and the environment, expelling heat in warmer weather and preserving and evenly distributing body heat in colder climates.

▲  
mattress  
height  
27cm  
▼

  
Gel  
memory foam

  
Ideal  
thermoregulation

  
Pocket  
springs

  
Anti-Bacterial  
& Anti-Allergic  
preferences

  
Washable  
cover



THE INNOVATIVE GRAPHENE FABRIC, USED FOR MATTRESS COVER, HAS INCREDIBLE FEATURES:

- Designed for people who prefer a cooler sleep surface
- Helps reduce static electricity
- Provides increased breathability
- Reduces bad odors
- Provides an anti-mite barrier

OEKO-TEX®  
CONFIDENCE IN TEXTILES  
**STANDARD 100**  
25.3.0154 INNOVATEX  
Tested for harmful substances.  
[www.oeko-tex.com/standard100](http://www.oeko-tex.com/standard100)

OEKO-TEX®  
CONFIDENCE IN TEXTILES  
**STANDARD 100**  
25.3.0155 INNOVATEX  
Tested for harmful substances.  
[www.oeko-tex.com/standard100](http://www.oeko-tex.com/standard100)



### Classic Pillow

The Manchester United Classic pillow features memory foam designed to conform to the weight and pressure of every individual. Made of molded memory foam, this pillow is now even more comfortable, airy, and optimized for holding a spine in a proper alignment during the whole night.

Outer cover: Top - Graphene fabric - 70% PES, 22% CLY, 8% Nylon  
Bottom - 100% PES

Inner cover: 100% Polyester jersey fabric

- OEKO-TEX® & CertiPUR® certified

DIMENSIONS: 60x40x12cm

- Memory foam
- Ergonomic support
- Washable cover
- Anti-Bacterial & Anti-Allergic preferences



### Contour Pillow

This high performance Contour pillow regulates moisture, odors, and temperature to ensure the ultimate night's sleep. The carefully planned design conforms to your head and spine shape, ensuring customized comfort by constantly adapting to changing sleep positions. This feature allows uninterrupted sleep and avoids pressure points and stiffness.

Outer cover: Top - Graphene fabric - 70% PES, 22% CLY, 8% Nylon  
Side fabric - 100% PES

Inner cover: 100% Polyester jersey fabric

- OEKO-TEX® & CertiPUR® certified

DIMENSIONS: 60x40x11/9cm

- Memory foam
- Adapts to head and neck
- Pressure and pain-relieving
- Hypoallergenic



### Travel Pillow

The Travel pillow is intended for those who want to feel extra head and neck support and indescribable comfort, even during the longest of travels. The core is made of molded memory foam of a high density, specifically shaped to give proper support at all the right places. The pillow is suitable not only for any seat and vehicle but also for every kind of sleeping posture with head straight ahead, aside, or back.

Outer cover: 100% PES

Inner cover: 100% Polyester jersey fabric

- OEKO-TEX® & CertiPUR® certified

DIMENSIONS: 34x29x10cm

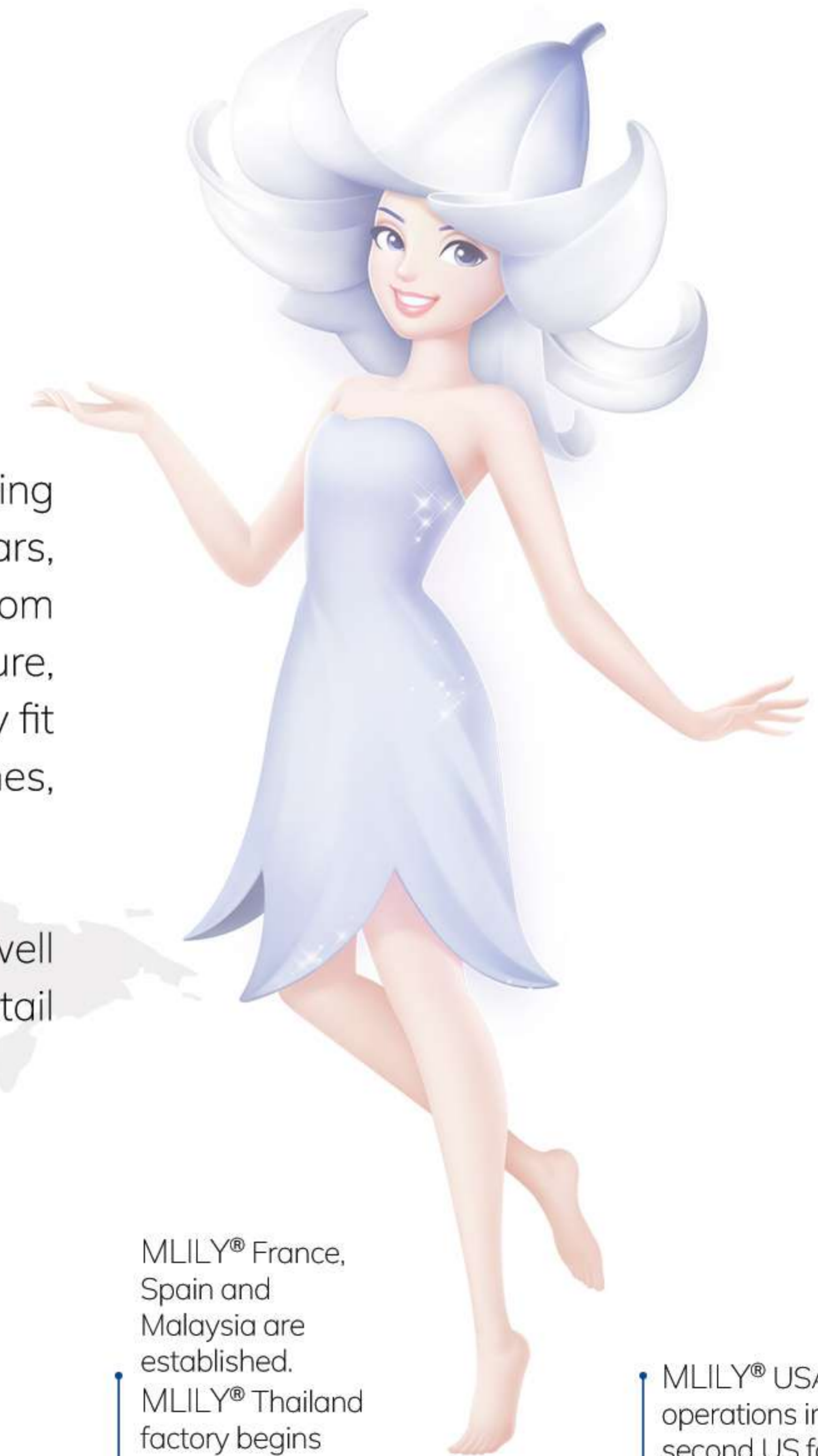
- Pressure and pain-relieving
- Ideal for travels
- Ideal support
- Anti-Bacterial & Anti-Allergic preferences



## BRAND HISTORY

Founded by Mr. Ni Zhanggen in 2003, MLILY® is a world-leading mattress brand. With the mission of improving people's deep sleep, MLILY® has focused on the research and test of mattress materials for more than 10 years, obtaining patents in China, the United States, Canada and other countries. The core products are made from unique AeroFusion™ memory foam material, of which the quality does not change with the external temperature, providing users with the same comfortable sleep experience under different weather conditions. Besides, they fit completely with the natural contour of human body and evenly relieve pressure to reduce turning over times, shorten fall asleep time and improve deep sleep.

MLILY® has five production bases in China, Serbia, the United States, Thailand and Spain. The products sell well in 73 countries and regions, such as China, America, Japan and Britain, with more than 5,000 global retail locations.





Healthcare CO., Ltd.  
999th DingYan Town, RuGao, JiangSu,  
China 226521  
info@hkfoam.com; sl@hkfoam.com; nicole@hkfoam.com  
www.mlily.com

Healthcare Europe d.o.o.  
Potes Rumska Petlja 5,  
22400, Ruma, Serbia  
sales@healthcareeurope.rs  
www.healthcareeurope.rs